

# MILL PLACE

FIELD  
DAY  
OFFICES

# TO LET

PREMIUM SERVICED OFFICES

OVERVIEW

KEY FEATURES

LOCATION

IN THE AREA

GALLERY

THE ACCOMMODATION

FLOORPLANS

FIELD DAY GROUP

VIDEO FLYTHROUGH

CONTACT

HOME



# MILL PLACE



## OVERVIEW

---

Mill Place offers premium serviced office space, just a few minutes' walk from the centre of St Peter Port, combining the convenience of being close to town, whilst avoiding peak traffic.

With a range of suites to accommodate operators from just two to 34 persons, Mill Place provides an all-inclusive, hassle-free solution serving all of your current and future business needs.



[CLICK TO WATCH A VIDEO FLYTHROUGH OF MILL PLACE](#)

[←](#) HOME [→](#)

# MILL PLACE

## KEY FEATURES

Mill Place has been comprehensively refurbished, to an exceptional standard. It offers a wide range of facilities designed to support every modern business. Every tenant will be provided with access to a range of high-quality amenities.

### The benefits of a serviced office include:

- No fitout costs
- No dilapidations
- Fixed monthly fee
- Flexible term length
- Increased operational efficiency
- Reduced admin and management time
- Easy to upscale for expanding businesses



**Contemporary furnished offices**



**Meeting rooms with AV Facilities**



**Breakout areas**



**Design-led reception area**



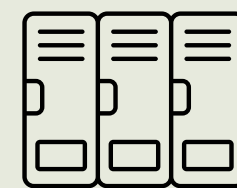
**Tea and coffee making facilities**



**Client Lounge**



**Showers**



**Lockers**



**Secure bike parking**



**Car parking (at additional cost)**



**Onsite café**



HOME



# MILL PLACE

## LOCATION

---

Ideally situated at the lower end of La Charroterie along Rue de Pré, the property's extensive frontage forms the gateway to St Peter Port.

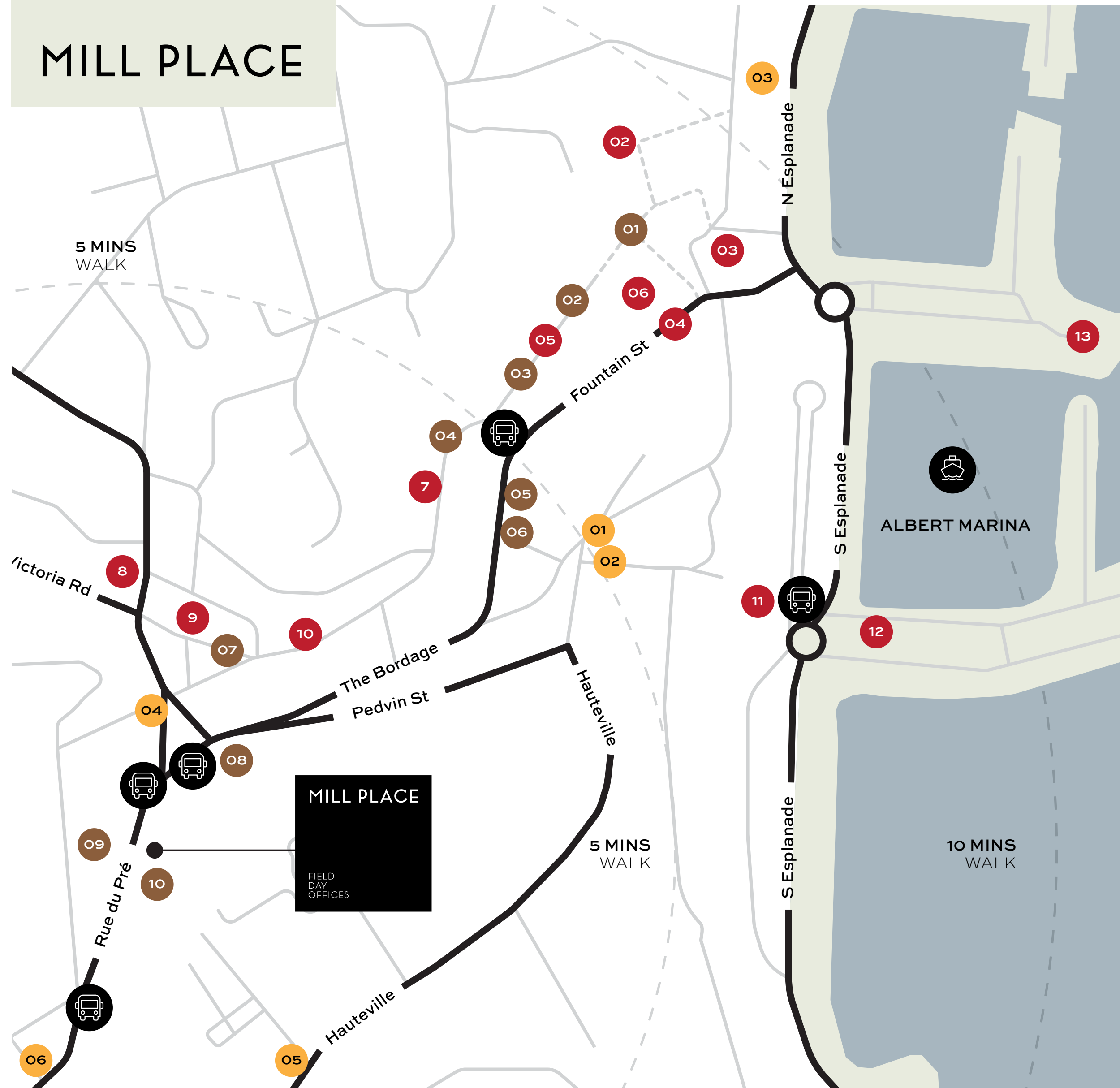
Its prominent position offers the perfect balance of accessibility and convenience, allowing tenants to avoid peak-time traffic while being just a short walk from the restaurants and amenities close by.

The property is also well-connected to major bus routes and benefits from the availability of nearby public, private and onsite parking spaces.

Other office occupiers in the vicinity include JP Morgan, Marsh, Moore Stephens, TMF Group, Skipton International, Ferbrache & Farrell, Guernsey Finance and The States of Guernsey.



# MILL PLACE



## RESTAURANTS

- 01 Le Nautique Restaurant
- 02 Dix Neuf
- 03 Rebellion Pizza
- 04 The Chip Inn
- 05 Chefan
- 06 Alba
- 07 Thai Too
- 08 Sitar
- 09 Confucius
- 10 The Old Quarter Restaurant
- 11 Coco
- 12 Slaughterhouse
- 13 Pier 17

## CAFES AND QUICK BITES

- 01 MYLK Market Kiosk
- 02 Lola
- 03 Nourish
- 04 The Pelican
- 05 RAW
- 06 Lameiros Deli
- 07 Mocca Coffee House
- 08 Addisons
- 09 2 Frenchie's
- 10 Camilla's at The Mill

## BARS AND PUBS

- 01 Cock and Bull
- 02 Cornerstone
- 03 Balthazar
- 04 Tokkuri
- 05 Dorset Arms
- 06 Drunken Duck

## IN THE AREA

This central location is surrounded by a vibrant mix of established and newly opened restaurants, bars, pubs, and cafés — perfect for client meetings, team lunches or unwinding after work.

Map not to scale. Walking times are approximate.

# MILL PLACE

## GALLERY

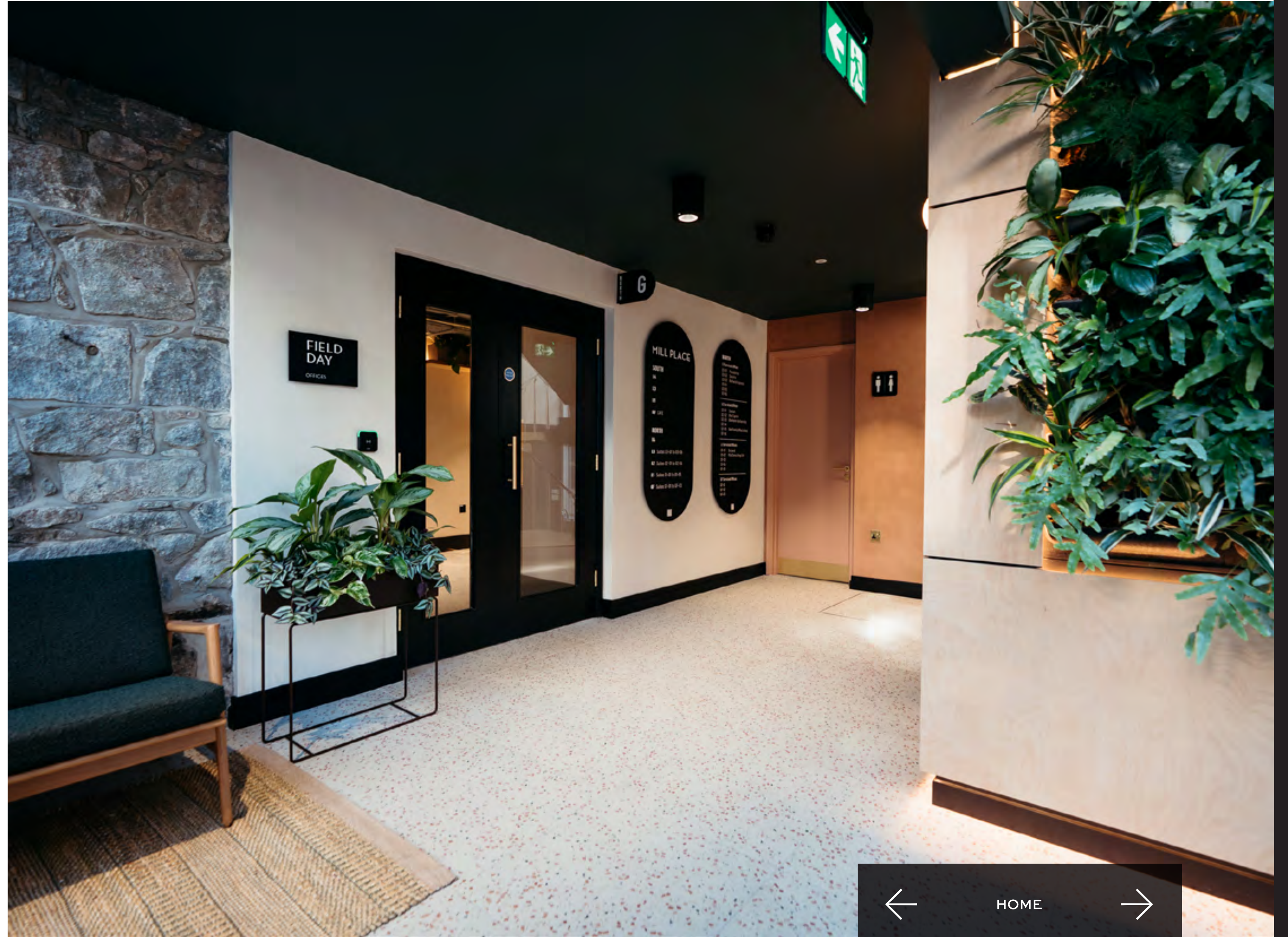
---

Originally built as a flour mill and later home to one of St Peter Port's bakeries, the building has robust stone walls and a bold presence, reflecting Guernsey's past, where the rhythm of industry shaped daily life.

The careful refurbishment preserves this rich heritage with meaningful touches that blend historical context with the modern workplace.



# MILL PLACE



# MILL PLACE

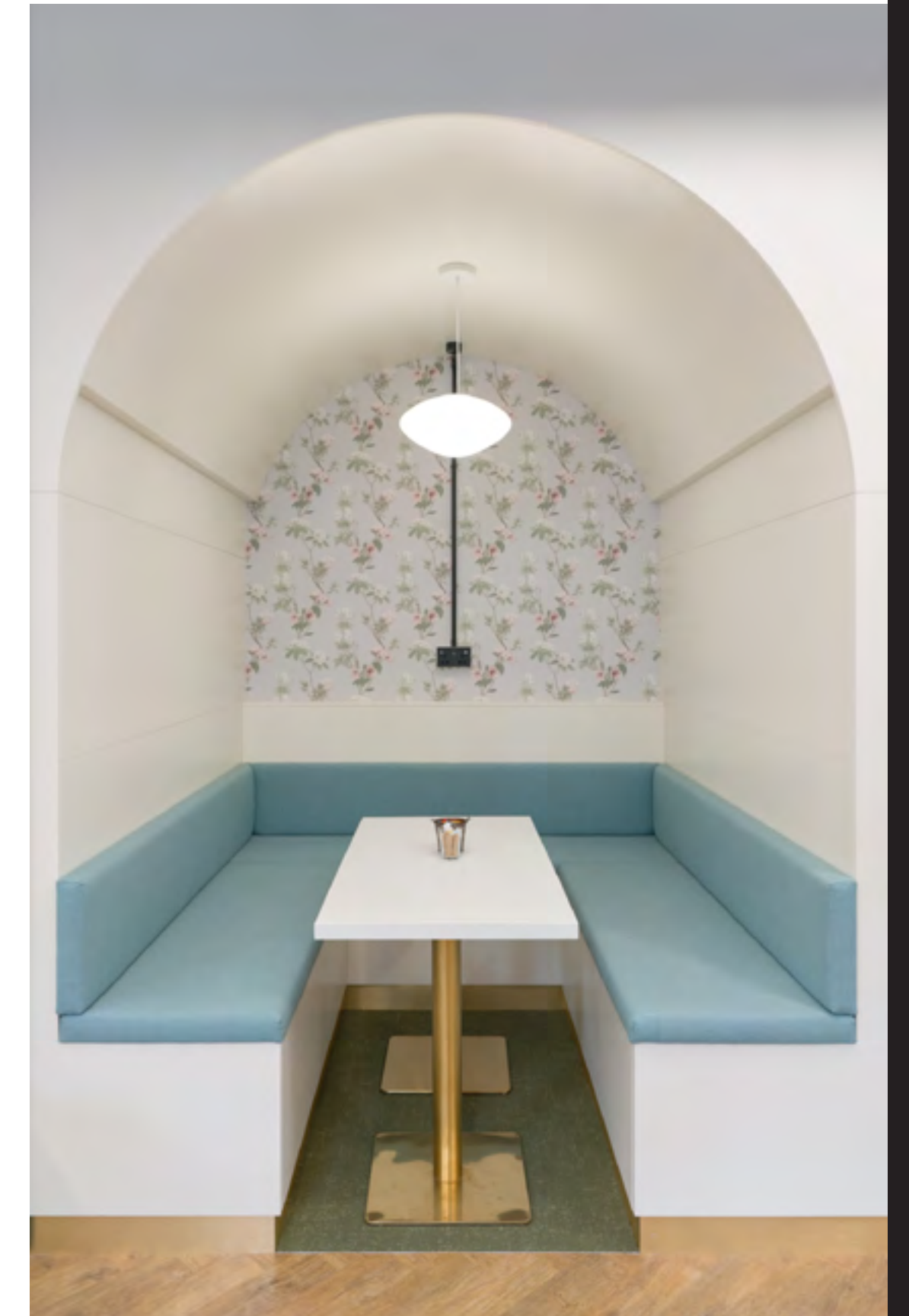


The onsite café will create the heart of Mill Place, providing a vibrant setting for work breaks, or to meet clients over coffee.

The café will also have a sunny, outside terrace ideal for alfresco dining and socialising with friends and colleagues.



# MILL PLACE



← HOME →

# MILL PLACE



Ground floor meeting rooms fully equipped with AV system and video conferencing facilities, will be available to all the occupiers of the building. Well suited to client meetings and team briefings, bookings will be made through an app.

The meeting room suite will also be serviced by a relaxing client lounge, the perfect break-out space or informal meeting space.

# MILL PLACE



03-04

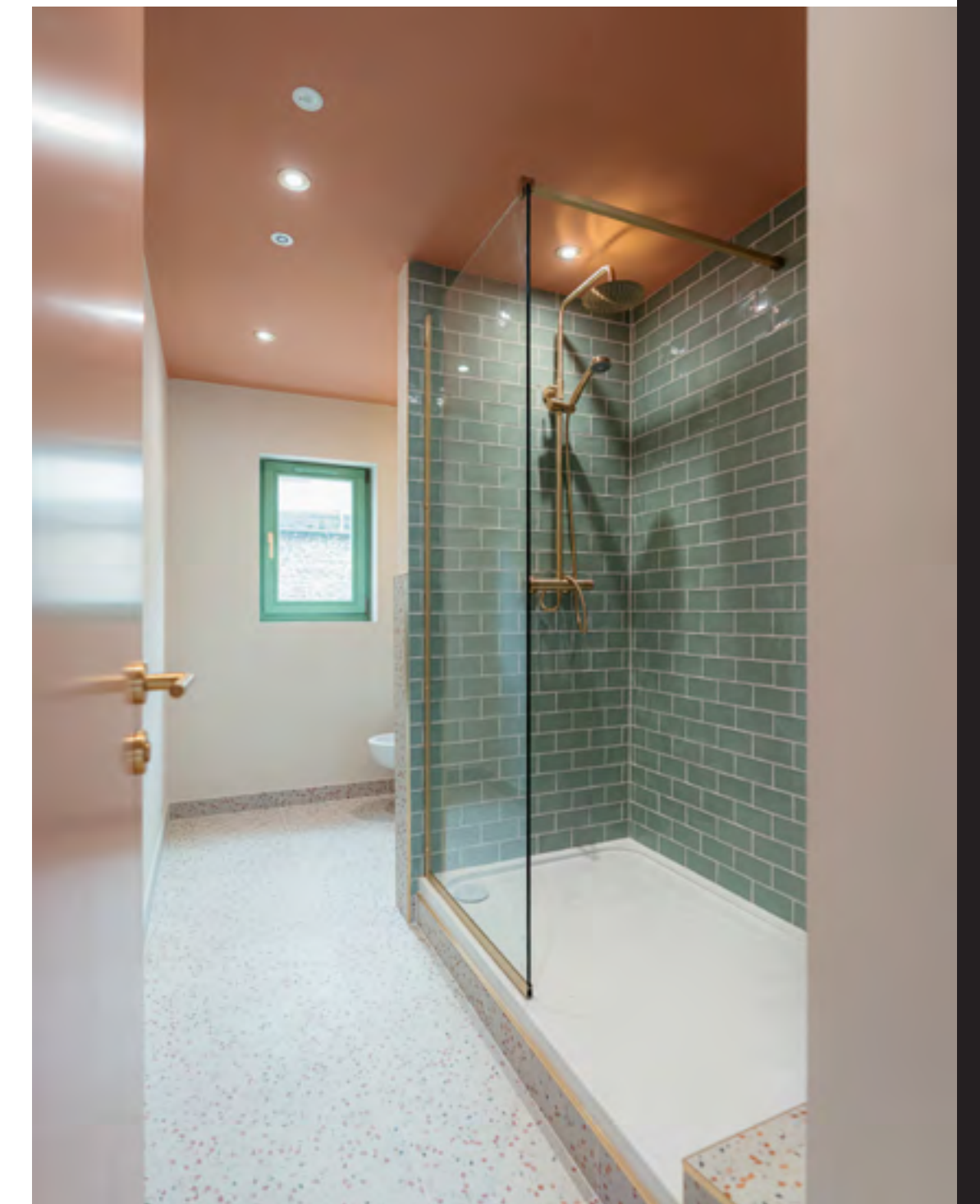
← HOME →

# MILL PLACE

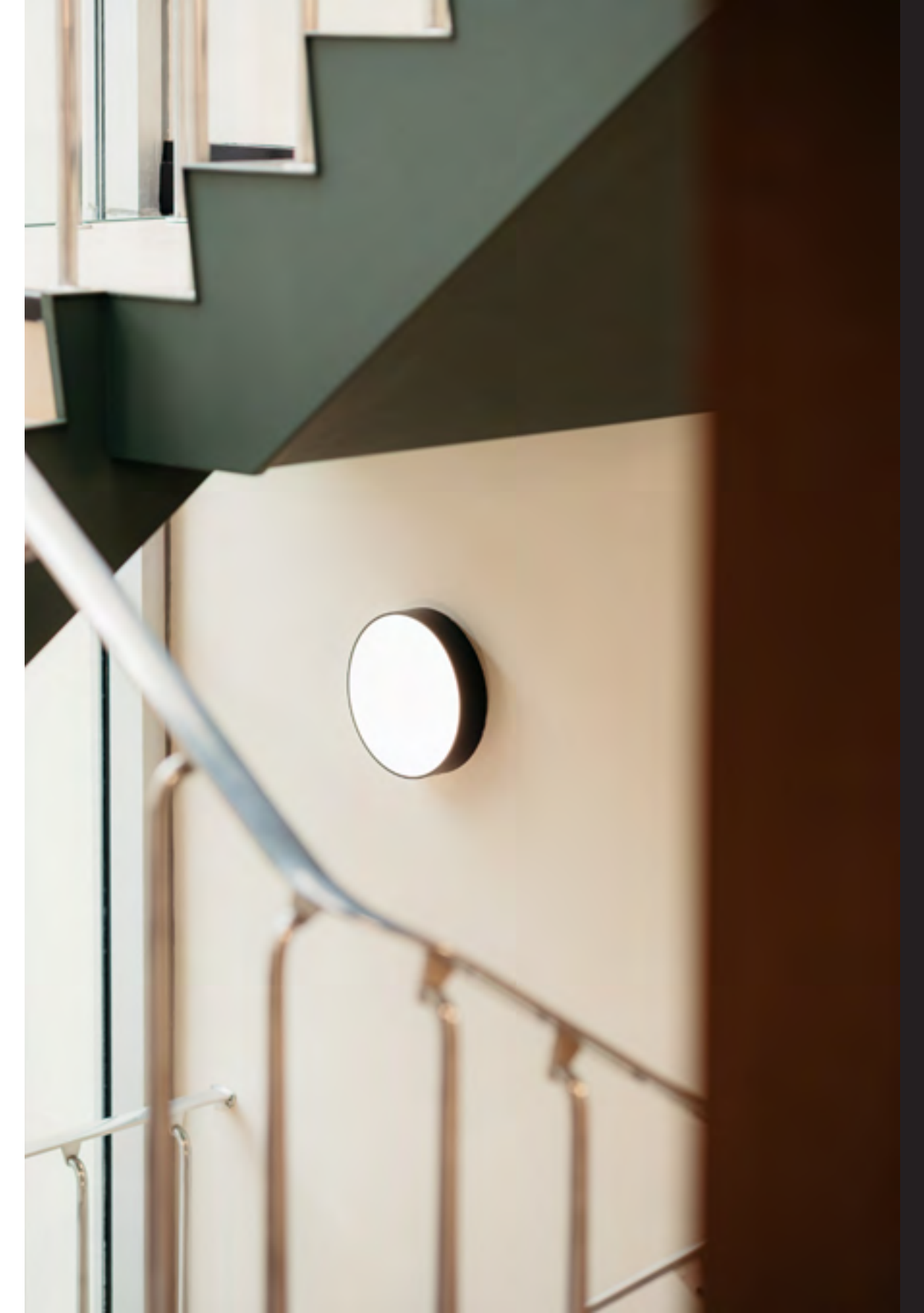
## STYLE

---

Mill Place is an inspiring and impactful workspace in a modern, playful, industrial style, with bold use of colour, natural wood, textured finishes and an abundance of greenery.



# MILL PLACE



# MILL PLACE



# MILL PLACE



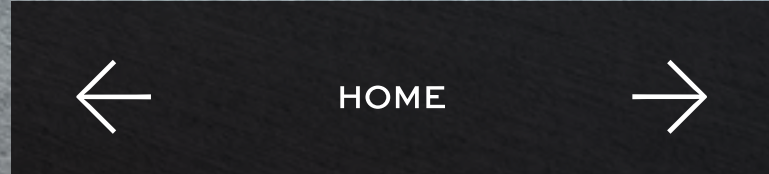
← HOME →



Indicative computer generated image

← HOME →

# MILL PLACE



# MILL PLACE

## THE ACCOMMODATION:

Mill Place offers flexible office suites suitable for businesses from two to 34 people.

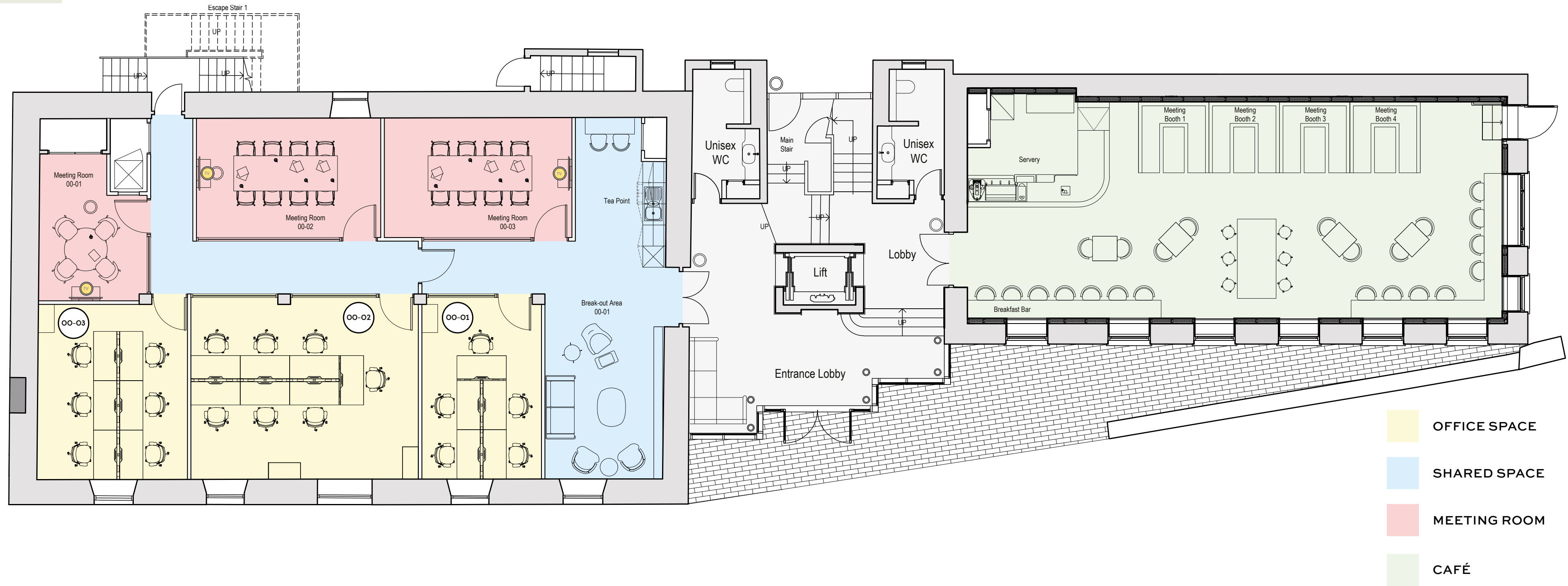
Arranged over six floors, the fully refurbished workspaces are beautifully finished and include a number of added features.

Larger suites ranging from 1,000 to 2,000 sq ft are also available on traditional long leases.

## WHAT'S INCLUDED:

- Building Service Charge
- TRP
- Electrics
- Water
- Building Insurance
- Cleaning
- Use of Fridge, Microwave and Dishwasher
- Use of Meeting Rooms
- High Speed Internet
- External Window Cleaning

| OFFICE NO. | FLOOR  | SUITE         | NO. OF DESKS | PAGE |
|------------|--------|---------------|--------------|------|
| 00-01      | GROUND | NORTH SUITE 1 | 5            | 15   |
| 00-02      | GROUND | NORTH SUITE 1 | 7            | 15   |
| 00-03      | GROUND | NORTH SUITE 1 | 6            | 15   |
| 01-01      | FIRST  | NORTH SUITE 2 | 8            | 16   |
| 01-02      | FIRST  | NORTH SUITE 2 | 5            | 16   |
| 01-03      | FIRST  | NORTH SUITE 2 | 11           | 16   |
| 01-04      | FIRST  | NORTH SUITE 2 | 6            | 16   |
| 01-05      | FIRST  | NORTH SUITE 2 | 5            | 16   |
| 01-06      | FIRST  | SOUTH SUITE 2 | 18           | 16   |
| 02-01      | SECOND | NORTH SUITE 3 | 3            | 17   |
| 02-02      | SECOND | NORTH SUITE 3 | 4            | 17   |
| 02-03      | SECOND | NORTH SUITE 3 | 5            | 17   |
| 02-04      | SECOND | NORTH SUITE 3 | 11           | 17   |
| 02-05      | SECOND | NORTH SUITE 3 | 5            | 17   |
| 02-06      | SECOND | NORTH SUITE 3 | 6            | 17   |
| 03-01      | THIRD  | NORTH SUITE 4 | 3            | 18   |
| 03-02      | THIRD  | NORTH SUITE 4 | 5            | 18   |
| 03-03      | THIRD  | NORTH SUITE 4 | 5            | 18   |
| 03-04      | THIRD  | NORTH SUITE 4 | 11           | 18   |
| 03-05      | THIRD  | NORTH SUITE 4 | 6            | 18   |
| 03-06      | THIRD  | NORTH SUITE 4 | 4            | 18   |
| 03-07      | THIRD  | SOUTH SUITE 3 | 18           | 18   |
| 04-01      | FOURTH | NORTH SUITE 5 | 34           | 19   |
| 04-02      | FOURTH | SOUTH SUITE 4 | 18           | 19   |
| 05-01      | FIFTH  | SOUTH SUITE 5 | 14           | 20   |



### GROUND FLOOR

OFFICE 00-01

OFFICE 00-02

OFFICE 00-03

NORTH SUITE 1

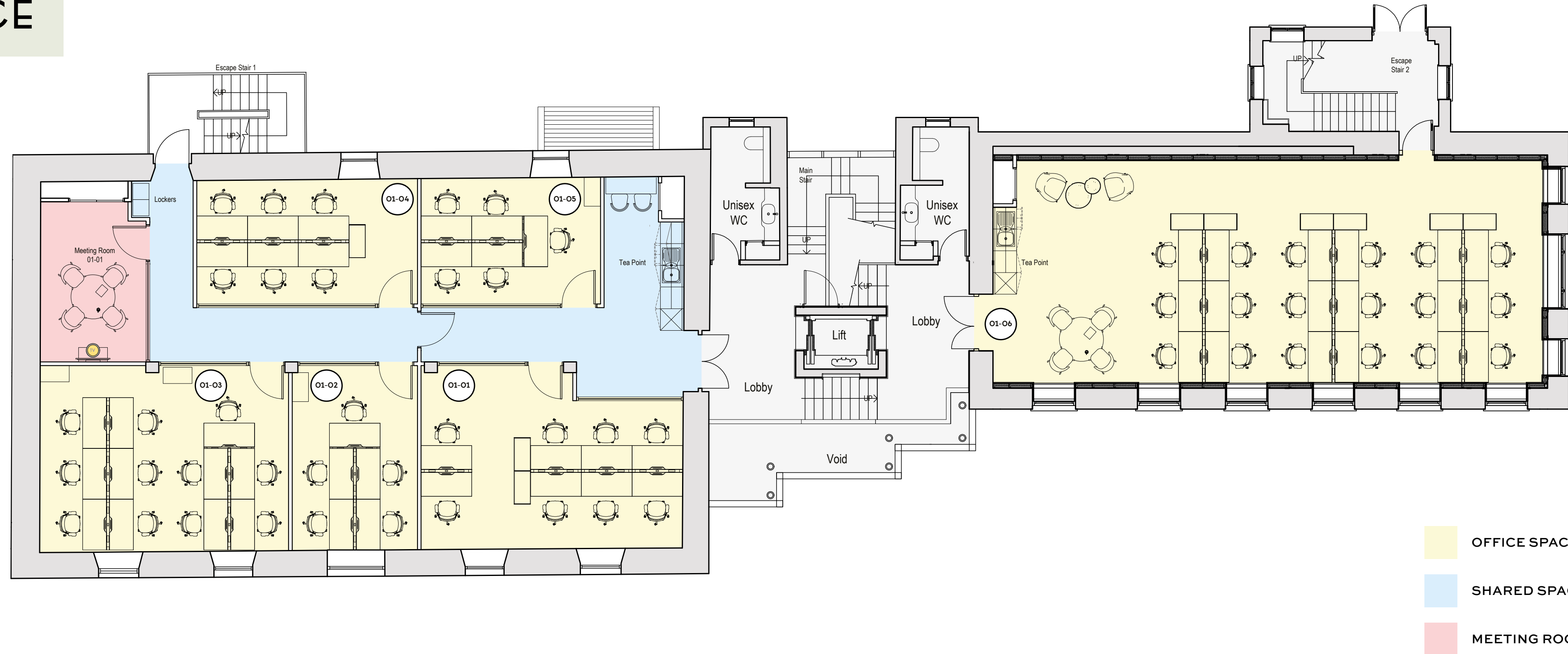
NORTH SUITE 1

NORTH SUITE 1

DESKS: 5

DESKS: 7

DESKS: 6



### FIRST FLOOR

OFFICE 01-01

OFFICE 01-02

OFFICE 01-03

OFFICE 01-04

OFFICE 01-05

OFFICE 01-06

NORTH SUITE 2

NORTH SUITE 2

NORTH SUITE 2

NORTH SUITE 2

NORTH SUITE 2

SOUTH SUITE 2

DESKS: 8

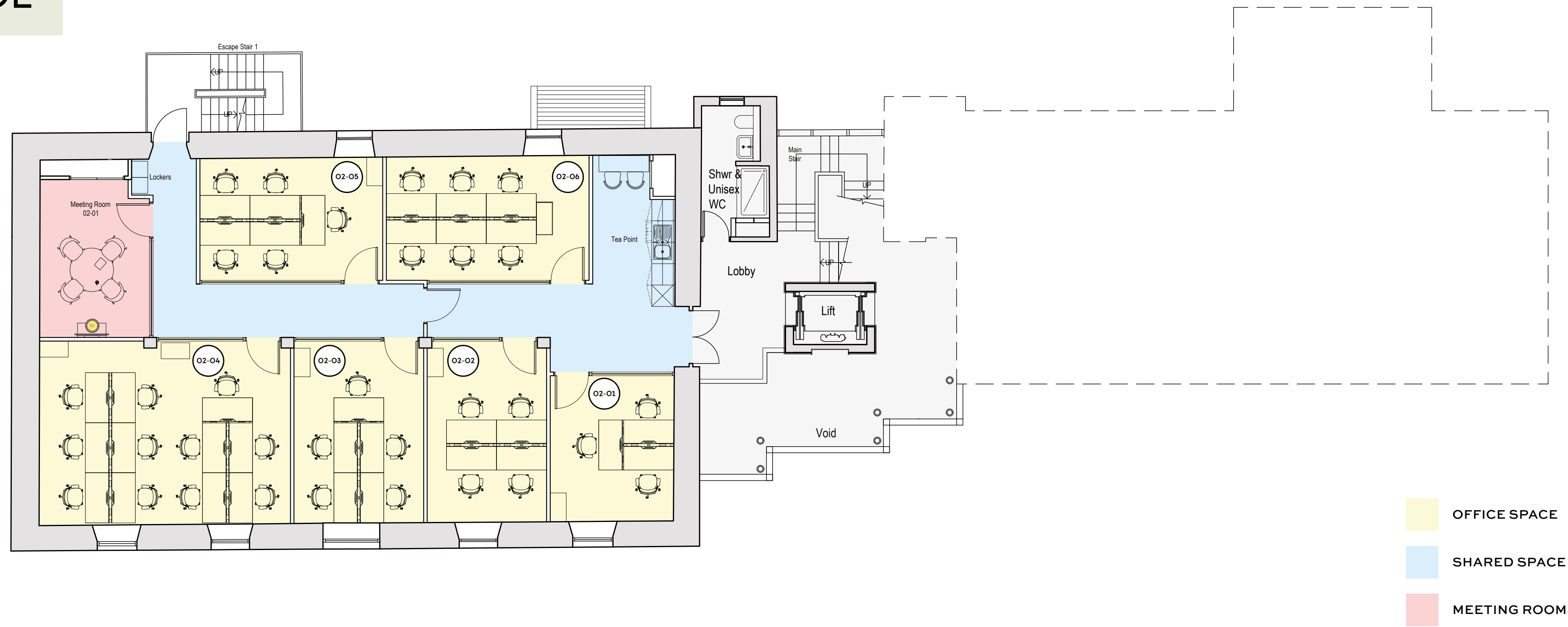
DESKS: 5

DESKS: 11

DESKS: 6

DESKS: 5

DESKS: 18



### SECOND FLOOR

OFFICE 02-01

OFFICE 02-02

OFFICE 02-03

OFFICE 02-04

OFFICE 02-05

OFFICE 02-06

NORTH SUITE 3

NORTH SUITE 3

NORTH SUITE 3

NORTH SUITE 3

NORTH SUITE 3

NORTH SUITE 3

DESKS: 3

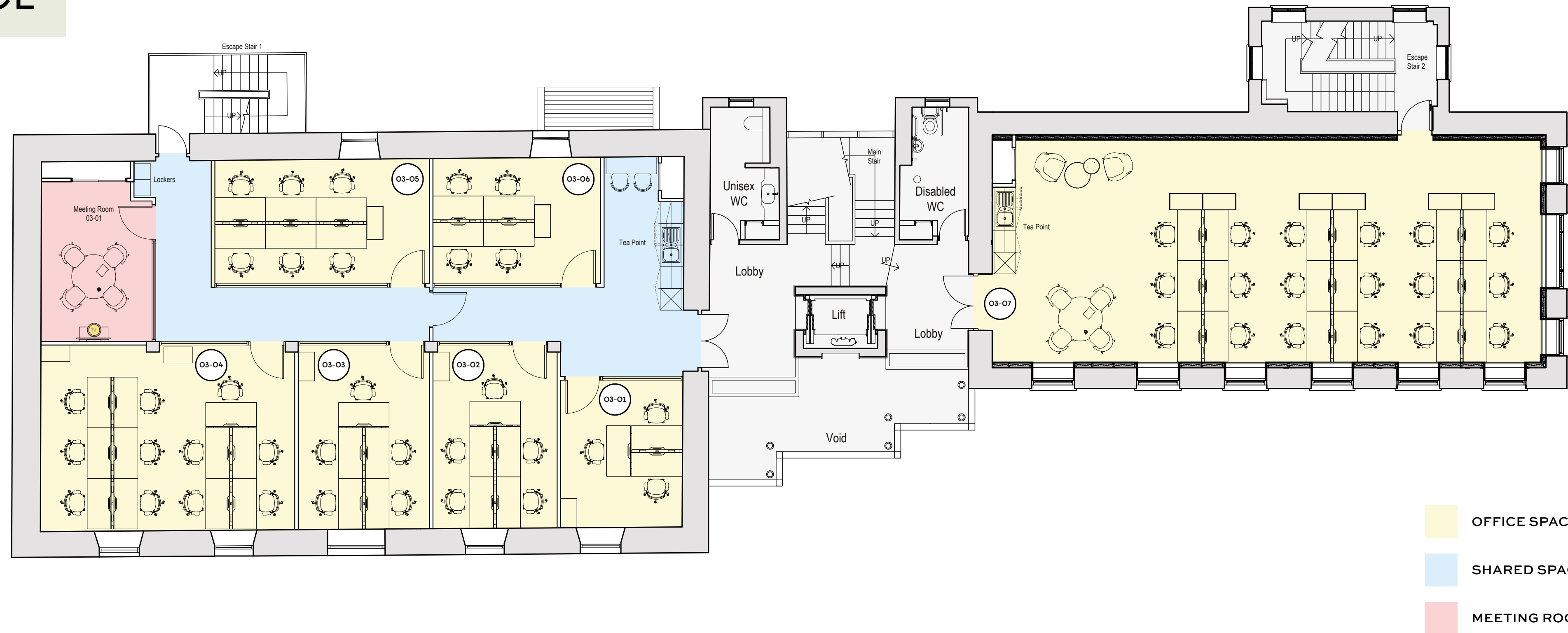
DESKS: 4

DESKS: 5

DESKS: 11

DESKS: 5

DESKS: 6



### THIRD FLOOR

OFFICE 03-01

OFFICE 03-02

OFFICE 03-03

OFFICE 03-04

OFFICE 03-05

OFFICE 03-06

OFFICE 03-07

NORTH SUITE 4

NORTH SUITE 4

NORTH SUITE 4

NORTH SUITE 4

NORTH SUITE 4

NORTH SUITE 4

SOUTH SUITE 3

DESKS: 3

DESKS: 5

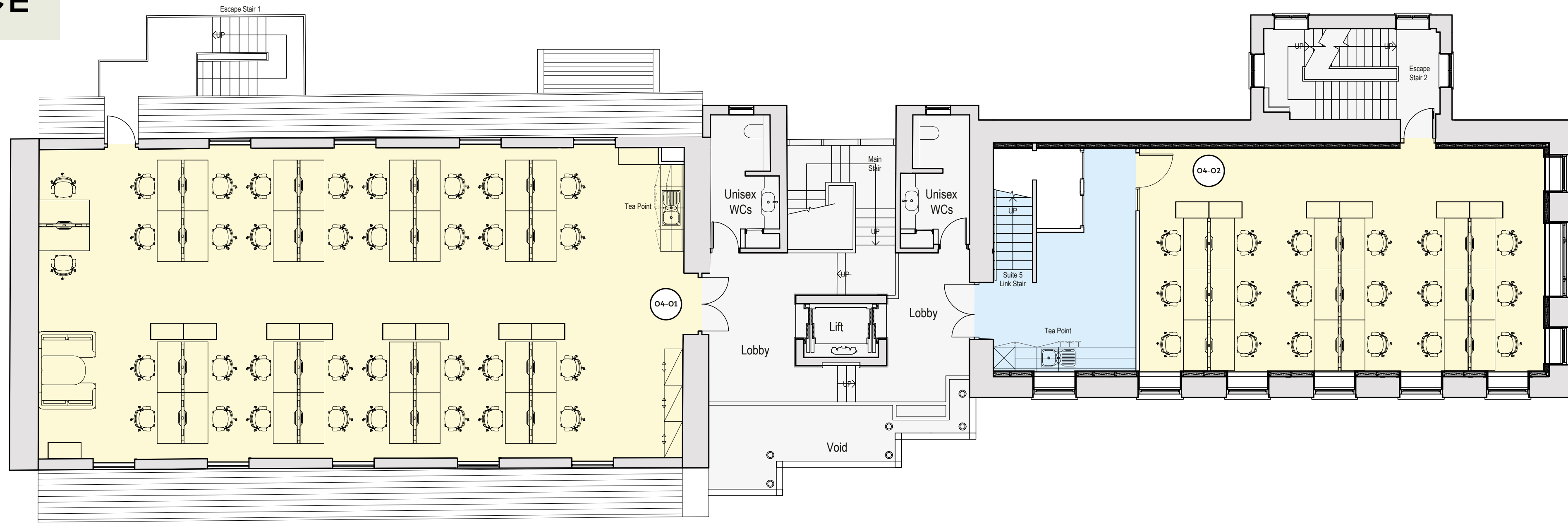
DESKS: 5

DESKS: 11

DESKS: 6

DESKS: 4

DESKS: 18



### FOURTH FLOOR

OFFICE SPACE

SHARED SPACE

#### OFFICE 04-01

#### OFFICE 04-02

NORTH SUITE 5

SOUTH SUITE 4

DESKS: 34

DESKS: 18



## FIFTH FLOOR

### OFFICE 05-01

### SOUTH SUITE 5

DESKS: 14



# MILL PLACE



## PART OF THE FIELD DAY GROUP

Field Day Offices are part of the Field Day Group — a dynamic and design-led commercial property development, investment and serviced office business focused on Guernsey.

Our projects are individual and broad-ranging, from stylish and contemporary office refurbishments, through to luxury health and fitness conversions and innovative reimagining of retail and leisure space, all underpinned by our core value of delivering high-quality, well-designed spaces built with the end user in mind.

### Recent projects include:

- |               |                |
|---------------|----------------|
| Upper House   | Royal Terrace  |
| Rock House    | Park Place     |
| Frances House | Mill Court     |
| Windsor House | Victoria House |

← HOME →

# MILL PLACE

FIELD  
DAY  
OFFICES

## FOR FURTHER INFORMATION

Please contact sole agents for further details,  
or to arrange a viewing:

**Wing Lai** MRICS

Director

T: 44 (0) 7781 412 578

E: wing.lai@watts.property

**Joanna Watts** MRICS

Director

T: +44 (0) 7781 130 686

E: jo.watts@watts.property



Watts Property Consultants Limited on behalf of the Vendors or Lessors of this property whose Agents they are, give notice that 1. These particulars are set out as a general outline only for guidance to intending Purchasers or Lessees, and do not constitute any part of an offer or contract. 2. Details are given without any responsibility and any intending Purchasers, Lessees or Third Parties should not rely on them as statements or representations of fact, but must satisfy themselves by inspection or otherwise as to the correctness of each of them. 3. No person in the employment of Watts Property Consultants Limited has any authority to make any representation or warranty whatsoever in relation to this property.

CLICK TO WATCH A VIDEO FLYTHROUGH OF MILL PLACE



HOME