

# St Andrew's House

Le Bordage, St Peter Port, Guernsey



*Computer generated image of refurbished reception area*



3,584 sq ft of high quality fitted offices



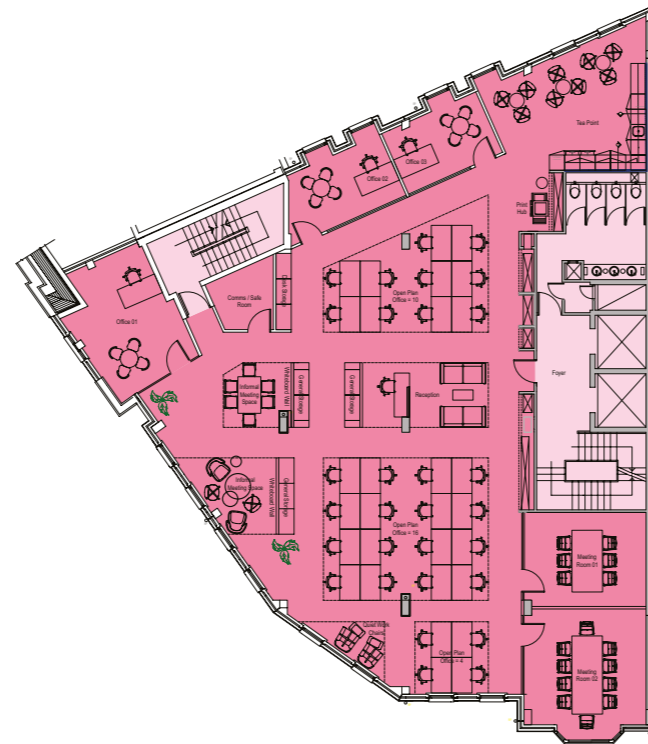
# Description

The second floor of St Andrew's House provides 3,584 sq ft of high quality fitted office accommodation with 5 allocated car parking spaces within the building's secure underground car park.

The offices have undergone a significant refurbishment and now provide high quality fitted office accommodation which includes air-conditioned modern open plan office space with 2 x meetings rooms, 1 x private office and a new kitchenette / break out area.

Further fitout and furniture packages could be available subject to terms.

The entrance and common areas are also soon to undergo a comprehensive refurbishment to provide an enhanced contemporary amenity for all the occupiers.



Second floor

Floor	sq ft	sq m
Second	3,584	333
<b>Total</b>	<b>3,584</b>	<b>333</b>

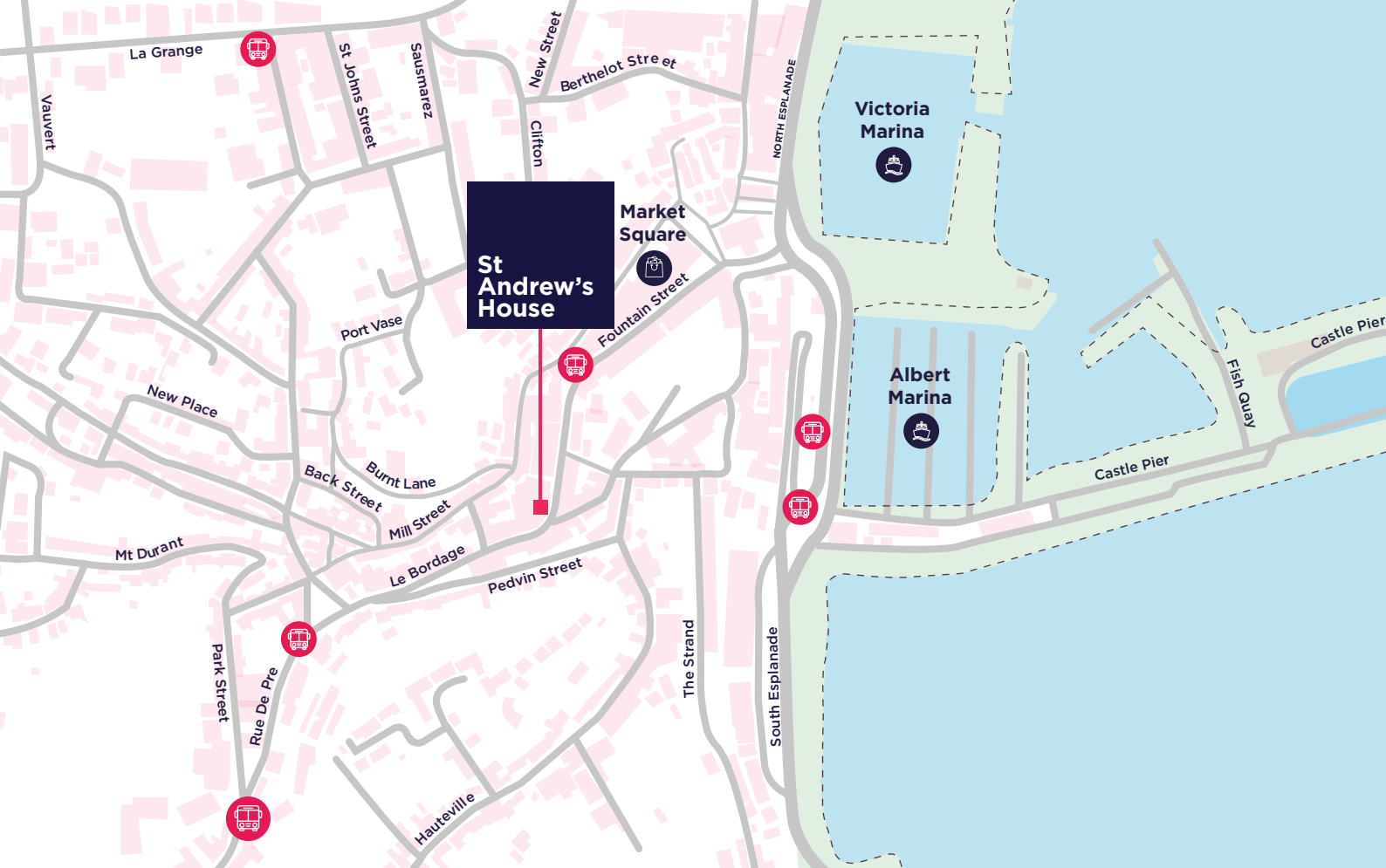
\* Furniture not included but landlord will consider providing subject to wider terms.

# Amenities

- Raised access flooring
- Kitchenette & breakout area
- Meeting rooms
- Private office
- Communal WCs
- 2 x Passenger lift
- LED lighting
- Air conditioning
- Suspended ceiling
- Carpet flooring
- Bicycle parking
- Shower facilities



Computer generated image of refurbished reception area



# Location

St Andrew's House is located on Le Bordage, one of the arterial routes linking St Peter Port with the south and south western parishes.

It forms part of an established office location and sits within walking distance of St Peter Port's High Street and the amenities it has to offer.

Destination	Walk
Market Square	3 mins
High Street	5 mins
Victoria Marina	8 mins
Sunken Gardens	10 mins
Guernsey Yacht Club	13 mins
La Vallette Bathing Pools	15 mins

# Contact

## Wing Lai

01481 740071

07781 412578

wing.lai@watts.property

## Joanna Watts

01481 740071

07781 130686

jo.watts@watts.property



Every care is taken in the preparation of these particulars, however, Watts Property Consultants Ltd nor its agents nor the landlord/vendor are responsible for any errors, omissions or misstatements contained within them. They do not constitute an offer or contract and no employee of Watts Property Consultants Ltd has the authority to make or give any representation, or warranty in relation to this property. Prospective purchasers and/or tenants should conduct their own investigation before making any agreement to purchase or lease this property. Measurements are given for guidance purposes only and are approximate. August 2024.